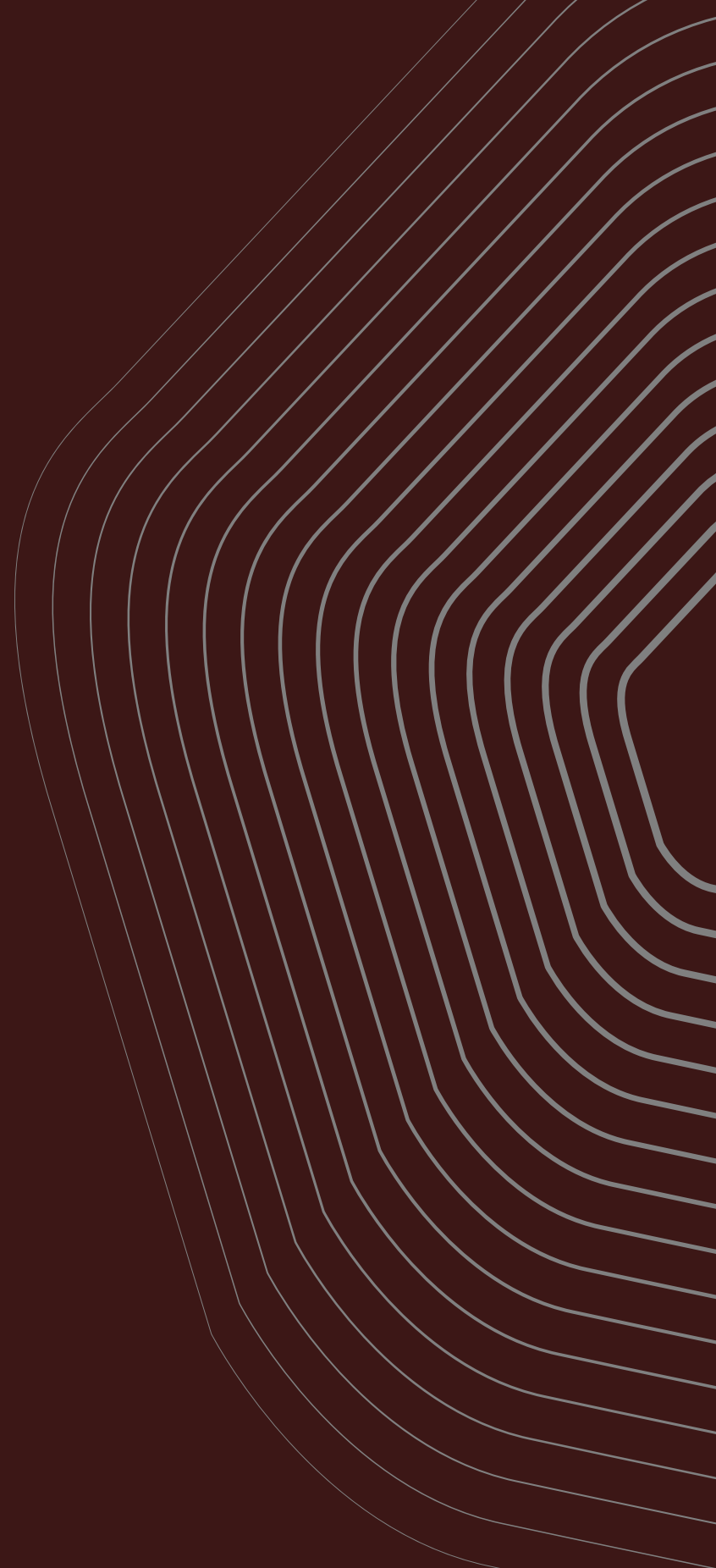


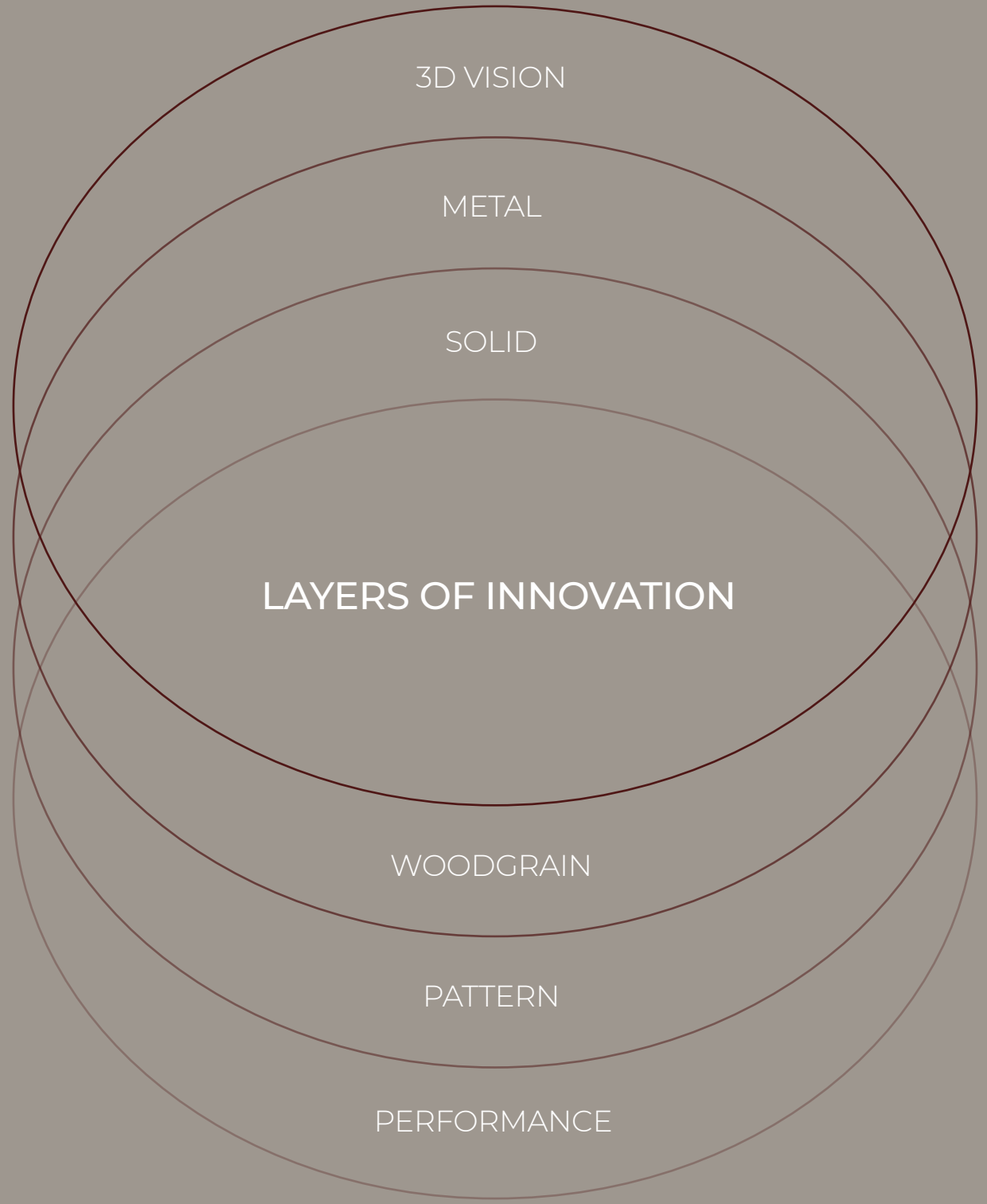
Carta[®]
Signature

TRANSFORM
BEYOND SURFACE



TRANSFORM

BEYOND
SURFACE



3D VISION

METAL

SOLID

LAYERS OF INNOVATION

WOODGRAIN

PATTERN

PERFORMANCE

CARTA EVOLVES WITH EVERY PARTNERSHIP, EVERY IDEA, EVERY SPARK OF DESIGN.

TOGETHER, WE MOVE BEYOND THE SURFACE FOR GREATER POSSIBILITIES.

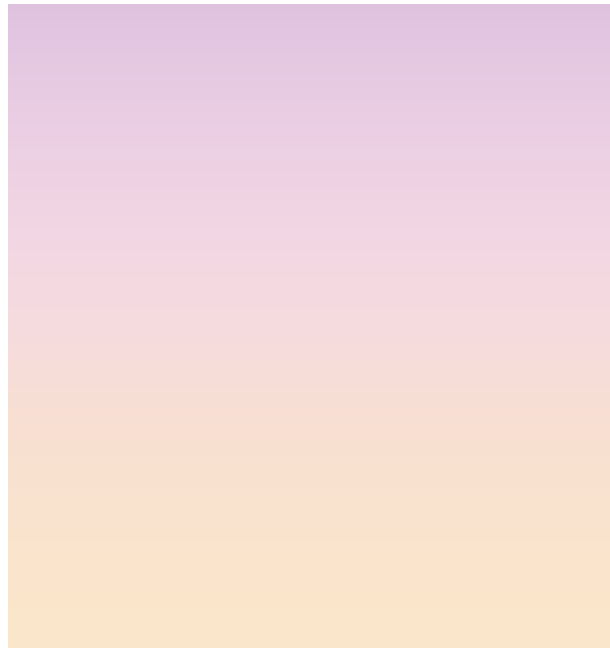
DIMENSIONAL DEPTH

The 3D vision series represent a bold interior statement. A surface becomes an eye-pleasing visual effect, playing with shadow and highlight.

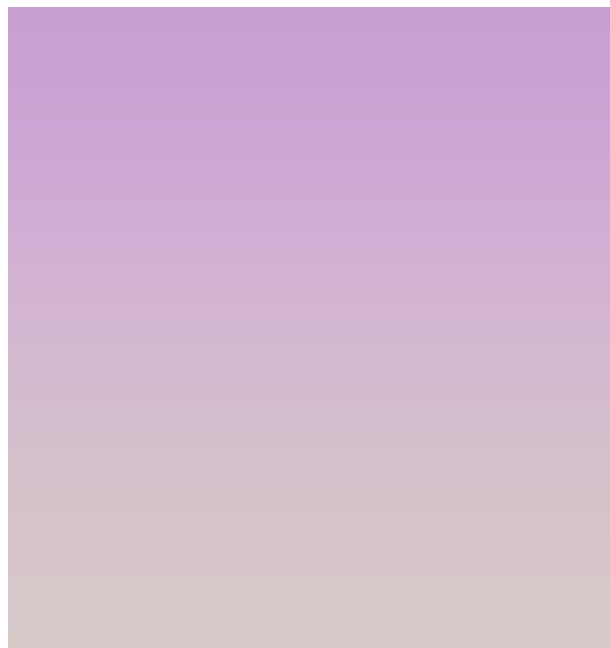
Perceive
the presence
of depth.
See it.
Visualise it.



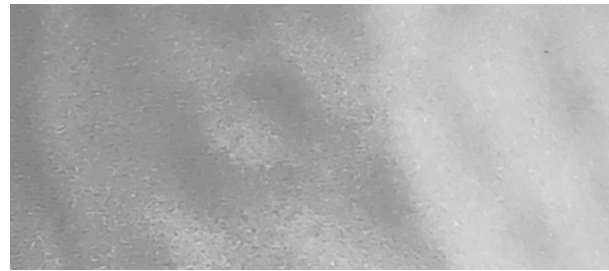
3D VISION




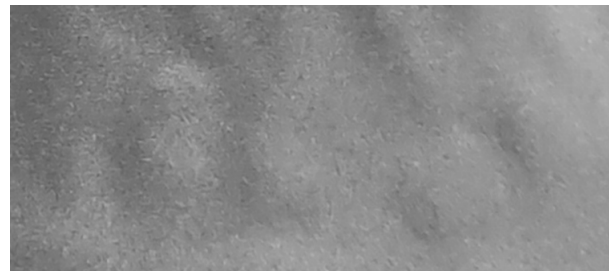
 **CX 5801 F**
White Spectra



 **CX 5802 F**
Silver Spectra



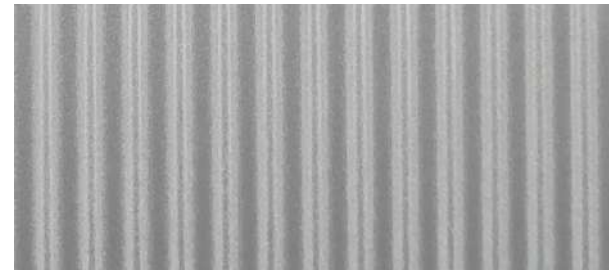
 **CX 5857 F**
Aluminium Ripple




 **CX 5856 F**
Silver Ripple




 **CX 5855 F**
Bronze Ripple




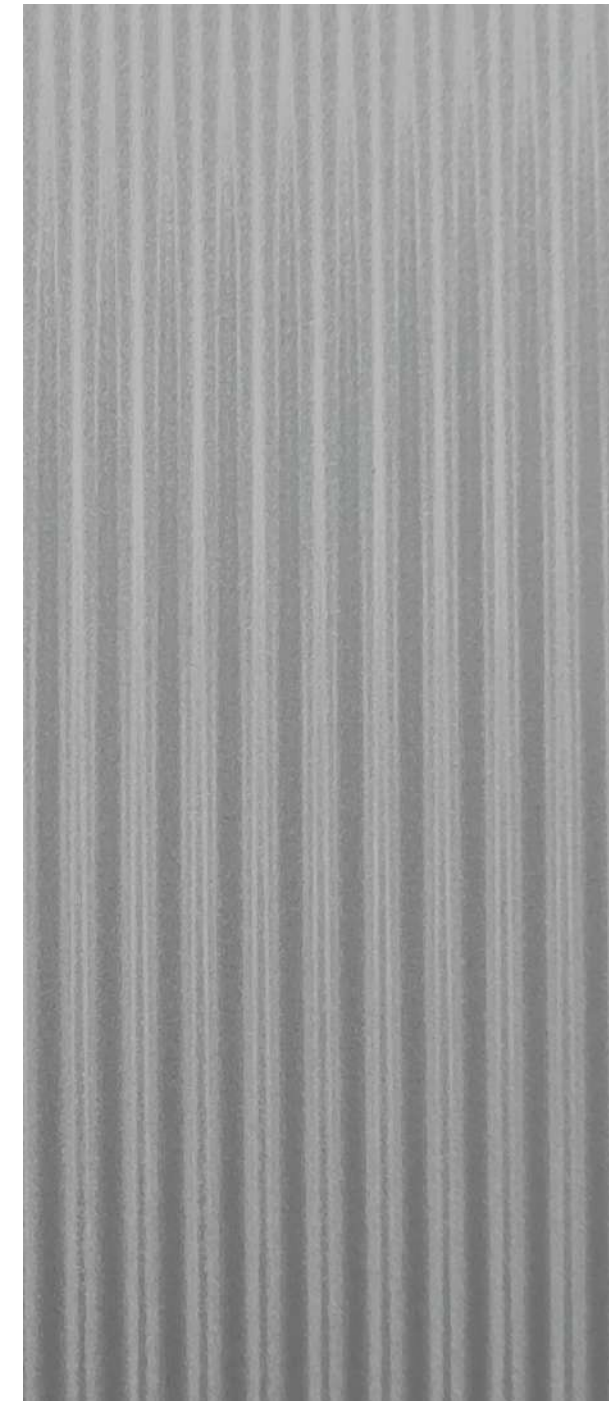
 **CX 5810 MG**
Corrugated Silver




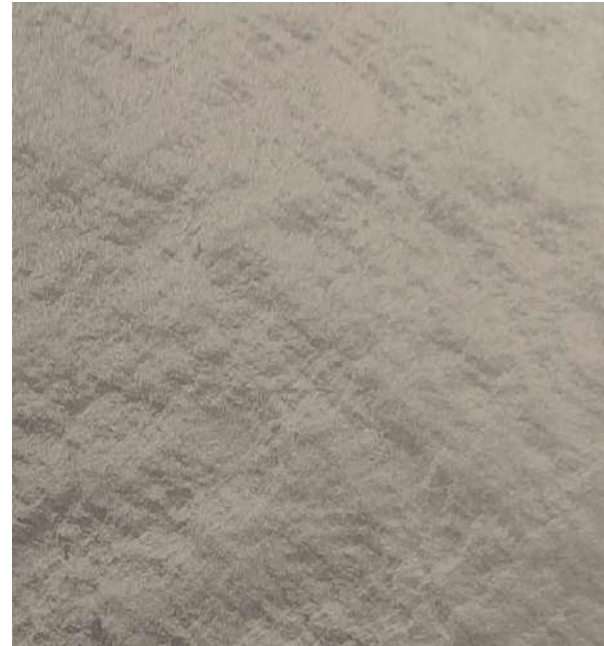
 **CX 5811 MG**
Corrugated Bronze



 **CX 5809 MG**
Corrugated Brown



 **CX 5812 MG**
Corrugated Aluminium



 **CX 5804 F**
Bronze Grunge



 **CX 5805 F**
Gold Grunge



 **CX 5803 F**
Silver Grunge

METAL PRECISION

Metal surfaces are notorious for their distinct, precise, and classy notes. Through these core attributes, a modern affirmation is born.

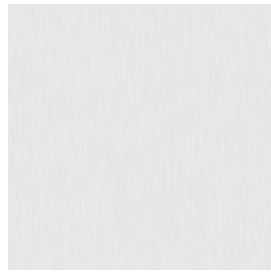


METAL

Designed to
speak of strength,
structure,
and sophistication.

METAL

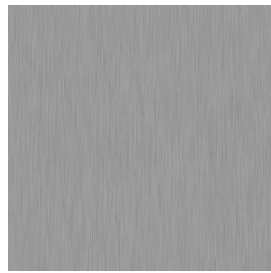
METAL



 **CX 5115 B**
White



 **CX 5116 B**
Black



 **CX 5113 B**
Silver



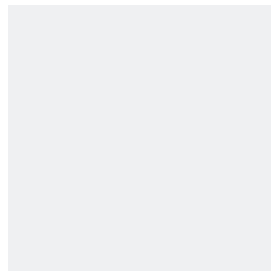
 **CX 5114 B**
Light Pecan



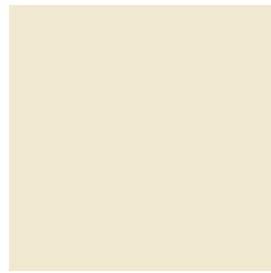
 **CX 5117 B**
Peach



 **CX 5118 B**
Mocha Brown



 **CX 5202 G**
Silver Mirror



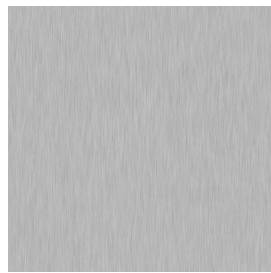
 **CX 5201 G**
Golden Mirror




 **CX 5208 B**
Brushed Silver



 **CX 5209 B**
Brushed Gold




 **CX 5210 B**
Brushed Stainless



 **CX 5211 B**
Vintage Bronze

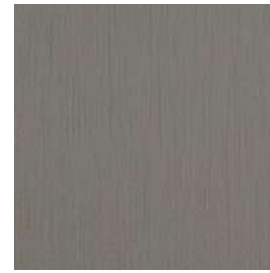


 **CX 5212 B**
Brushed Copper

METAL



 **CX 5504 CB**
Matte Silver



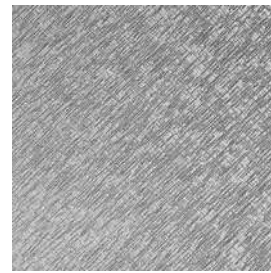
 **CX 5505 CB**
Matte Titanium



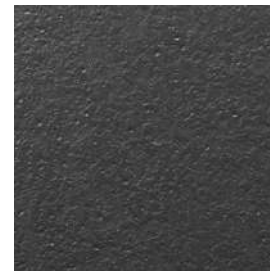
 **CX 5506 CB**
Matte Copper




 **CX 5507 CB**
Matte Gold



 **CX 5901 SM**
Silver Plaid



 **CX 5905 SM**
Rusted Aluminium



 **CX 5904 SM**
Antique Rose



 **CX 5503 CB**
Matte Bronze




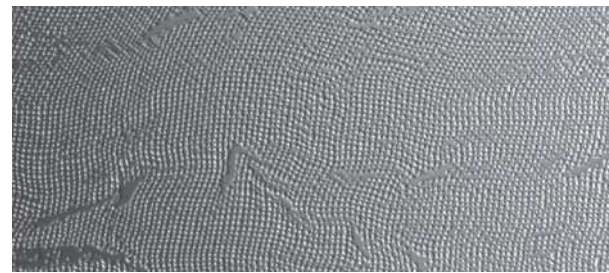
 **CX 5906 SM**
Pebbled Beige



 **CX 5907 SM**
Pebbled Rose



 **CX 5908 SM**
Pebbled Aluminium



 **CX 5902 SM**
Silver Grid



 **CX 5903 SM**
Copper Grille

COLOR FOUNDATIONS

A sense of balance in an ambience is achieved through something so fundamental : the solids. They are the harmony in a design composition.

Carta[®]
signature

Something basic.
Something simple.
Something elemental.

SOLID

SOLID



SOLID



CX 0326 DM Ivory White, CX 0122 DM Snowflake Grey, CX 0129 DM Clay White, CX 0303 DM Silver Grey



CX 0623 DM Whisper Grey, CX 0324 DM Rhino Grey, CX 0627 DM Thunder Grey, CX 0304 DM Versatile Beige



CX 0325 DM Harbour Grey, CX 0321 DM Steel Grey, CX 0305 DM Elephant Grey, CX 0306 DM Light Taupe



CX 0307 DM Asphalt Grey, CX 0628 DM Absolute Black, CX 0319 DM Roast Cacao, CX 0241 DM Tuscan Brown

SOLID



CX 0301 DM Simply White, CX 0633 DM Antique White, CX 0134 DM Rosy Pink, CX 0235 DM Macaroon Blue



CX 0631 DM Almond Beige, CX 0509 DM Mustard Yellow, CX 0317 DM Dusty Pink, CX 0314 DM Stone Blue



CX 0515 DM Cider Red, CX 0516 DM Spruce Blue, CX 0340 DM Kermit Green, CX 0242 DM Jade Green



CX 0232 DM Umber Chocolate, CX 0313 DM Burnt Orange, CX 0318 DM Clay Red, CX 0236 DM Pacific Blue

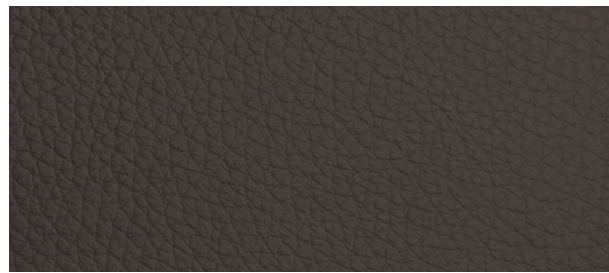
SOLID



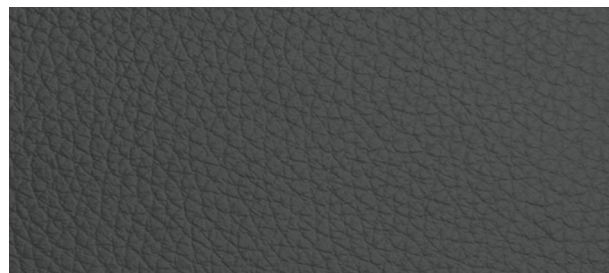
SOLID SPECIAL TEXTURE



CX 0309 NN
Sepia Creme



CX 0241 NN
Tuscan Brown



CX 0307 NN
Asphalt Grey



CX 0628 NN
Absolute Black

NATURAL WARMTH

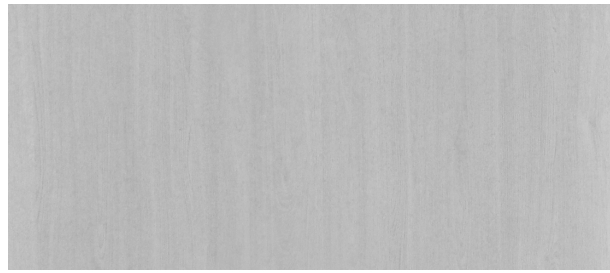
The key to connect nature to interior spaces is wood element. It radiates raw beauty and genuine warmth. Simply, it is timeless.


Time, beautifully
transcended with
a perpetual
material language.




WOODGRAIN

WOODGRAIN






 **CX 9511 BW**
Harmony Hamlet Oak



 **CX 9512 BW**
Sweet Hamlet Oak




 **CX 9309 SW**
Dusk Village Oak  



 **CX 9510 BW**
Pure Hamlet Oak




 **CX 9307 SW**
Midday Village Oak  






 **CX 9308 SW**
Dawn Village Oak  

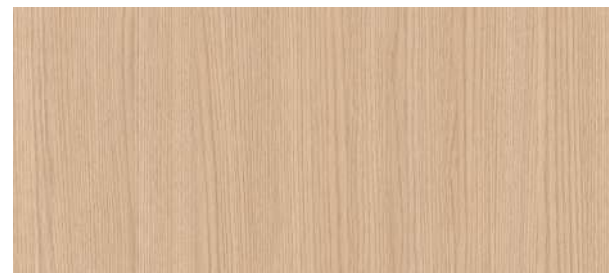
WOODGRAIN






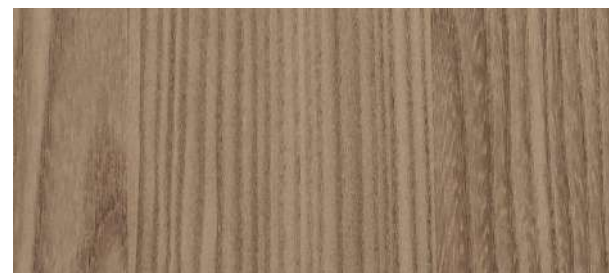
 **CX 9700 DM**
Bianco Stefano Oak




 **CX 9311 BW**
Crema Stefano Oak  






 **CX 9310 BW**
Natural Stefano Oak  






 **CX 9230 BW**
Bruno Stefano Oak



 **CX 9312 BW**
Rustico Stefano Oak  



 **CX 9313 BW**
Scuro Stefano Oak  

WOODGRAIN



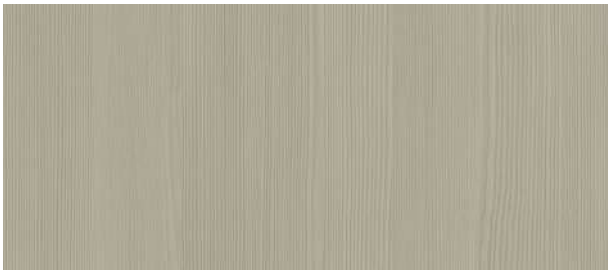
CX 9370 BW
Alberta Aria Pine

10ft P



CX 9372 BW
Regina Agatha Pine

10ft P



CX 9371 BW
Victoria Anne Pine

10ft P



CX 9373 BW
Ottawa Alba Pine

10ft P



CX 9374 BW
Scotia Athena Pine

10ft P



CX 9203 NW
Light Mapache Oak



CX 9204 NW
Cocoa Mapache Oak



CX 9202 NW
Crème Mapache Oak



CX 9205 NW
Natural Mapache Oak




CX 9206 NW
Charcoal Mapache Oak


WOODGRAIN

WOODGRAIN




 **CX 9519 BW**
Sugar Sweet Chestnut




 **CX 9220 SW**
Gabriel Alps Chestnut




 **CX 9222 SW**
Maudit Alps Chestnut



 **CX 9521 BW**
Caramel Sweet Chestnut




 **CX 9223 SW**
Paradiso Alps Chestnut

WOODGRAIN




 **CX 9201 BW**
White Mapache Oak




 **CX 9377 BW**
Light Logan Oak




 **CX 9375 BW**
Wheatered Logan Oak




 **CX 9200 BW**
Dark Logan Oak



 **CX 9125 BW**
Majorca Sea Walnut



 **CX 9376 SW**
Briar Logan Oak

WOODGRAIN



CX 9250 BW
Halona Denali Ash



CX 9252 BW
Nauja Denali Ash



CX 9251 BW
Malina Denali Ash



CX 9314 BW
Classic Dakota Walnut



CX 9315 BW
Umber Dakota Walnut



CX 9320 BW
Freya Nordic Ash



CX 9321 BW
Hilda Nordic Ash



CX 9253 BW
Truffle Brown Hickory



CX 9322 BW
Odin Nordic Ash



CX 9254 BW
Sepia Brown Hickory



CX 9319 BW
Frode Nordic Ash

WOODGRAIN

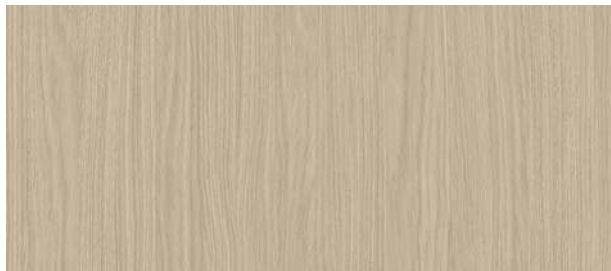
WOODGRAIN



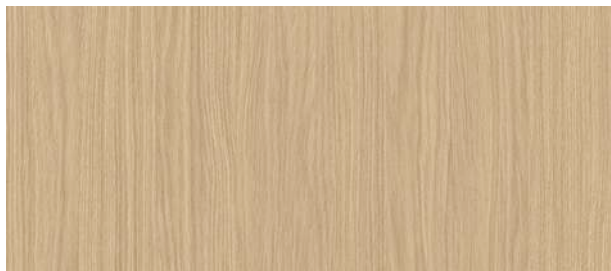
 **CX 9316 DM**
Light Texas Pecan  



 **CX 9318 DM**
Creme Texas Pecan  



 **CX 9258 SW**
Chalk English Oak



 **CX 9256 SW**
Nougat English Oak



 **CX 9317 DM**
Classic Texas Pecan  




 **CX 9257 SW**
Beluga English Oak

WOODGRAIN



 **CX 9524 BW**
Archer Oak



 **CX 9226 BW**
Santorini Sea Walnut



 **CX 9527 BW**
Wildery Elm



 **CX 9529 BW**
Morris Teak




 **CX 9717 BW**
Cinnamon Teak  




 **CX 9228 BW**
Ibiza Sea Walnut

WOODGRAIN




 **CX 9214 SW**
Magnolia Southern Pine




 **CX 9215 SW**
Marion Southern Pine



 **CX 9530 BW**
Grand Paradiso Oak




 **CX 9259 BW**
Monte Perdido Oak




 **CX 9213 SW**
Charleston Southern Pine




 **CX 9531 BW**
Cinque Terre Oak

WOODGRAIN




 **CX 9712 BW**
Pertiwi Indies Teak




 **CX 9713 BW**
Shinta Indies Teak




 **CX 9714 BW**
Rama Indies Teak




 **CX 9715 BW**
Bhumi Indies Teak

WOODGRAIN




 **CX 9701 DM**
Washed Butternut Walnut




 **CX 9702 BW**
Champagne Common Walnut




 **CX 9378 BW**
Kent Britannia Oak




 **CX 9710 BW**
Castano Sera Walnut



 **CX 9716 BW**
Buttermilk Teak




 **CX 9229 BW**
Natural Brazilian Walnut



 **CX 9379 BW**
Devon Britannia Oak



 **CX 9711 BW**
Rossa Sera Walnut



WOODGRAIN


HARMONIZED GRAIN

Harmonized grain extends interior surfaces beyond aesthetic purpose — it resonates what being in nature feels like.




 **CX 9804 HG**
Coal Casela Oak




 **CX 9801 HG**
Flaxen Casela Oak



 **CX 9802 HG**
Amber Casela Oak



 **CX 9803 HG**
Brown Casela Oak

WOODGRAIN

PATTERN RHYTHMS

Inspired by surrounding environments,
the pattern collection embodies innovation
in motifs. It catalyzes rhythm in a versatile way.

Carta[®]
signature

Composed to appeal,
defining atmosphere
with movement.

PATTERN

PATTERN

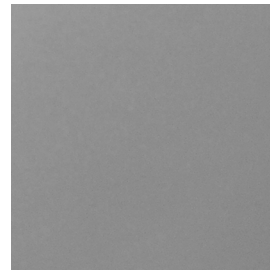
PATTERN



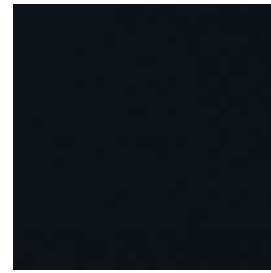
CX 1101 G
Pearl



CX 1102 G
Bronze Pearl



CX 1103 G
Grey Pearl



CX 1204 G
Galaxy Black



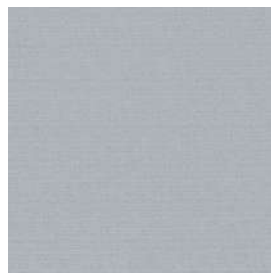
CX 2305 SK
Grey Petit Plaid



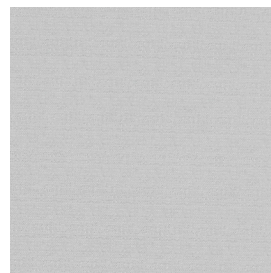
CX 2306 SK
Mocha Petit Plaid



CX 2307 SK
Ivory Petit Plaid



CX 2308 SK
Iron Woven Linen



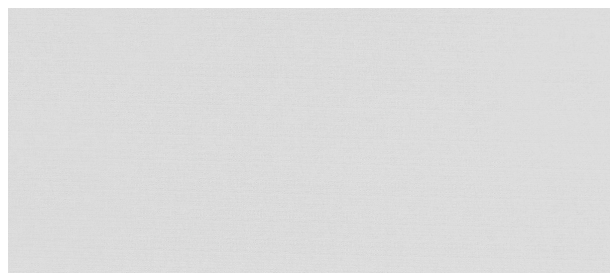
CX 2309 SK
Smoke Woven Linen



CX 2210 MT
Loft Zilk



CX 2211 MT
Irish Zilk



CX 2312 SK
Coconut Woven Linen



CX 2313 SK
Nude Woven Linen

PATTERN



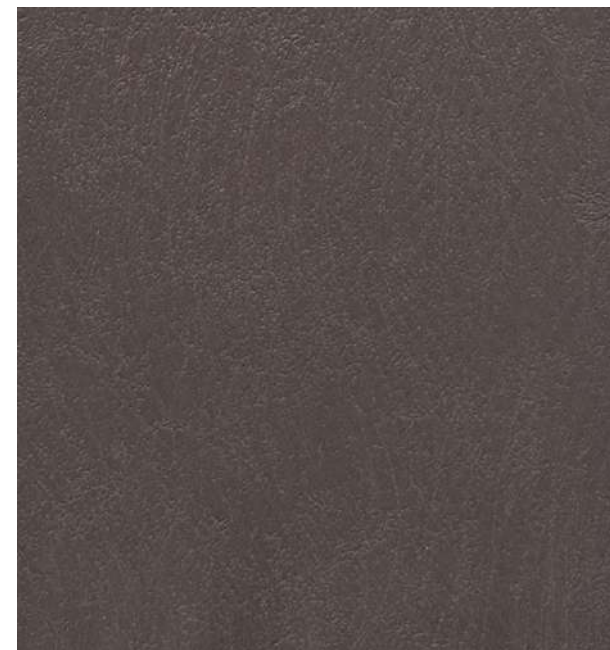
CX 2803 SK
Tropical Resort



CX 2802 VS
Ivory Silk




CX 2801 AG
Ancient Bhatti



CX 2804 SR
Scrubbed Concrete




 **CX 3514 DM**
Luna Lux Marmo



 **CX 3315 NR**
White Vermont Slate


10ft 

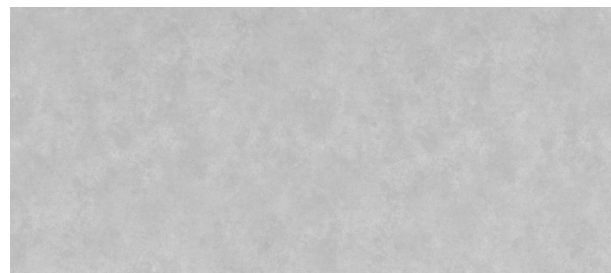



 **CX 3316 NR**
Crema Vermont Slate



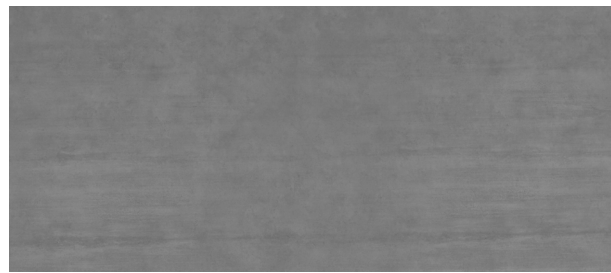



 **CX 3517 DM**
Terra Lux Marmo



 **CX 3318 DM**
Earth Vermont Slate


10ft 



 **CX 3319 NR**
Rugged Grey Concrete







 **CX 2320 MT**
Smooth Grey Concrete

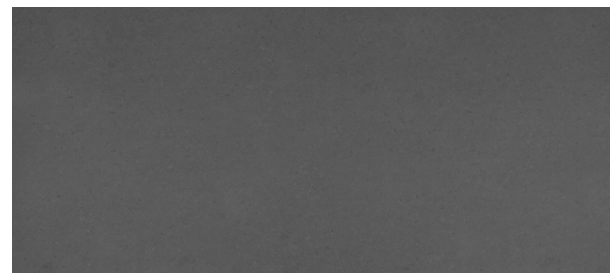




 **CX 2521 DM**
Prealpi Piccola Granite



 **CX 2522 DM**
Dolomia Piccola Granite




 **CX 2524 DM**
Gris Piccola Granite



 **CX 2326 DM**
Fine Graphite Concrete

10ft 



 **CX 2223 MT**
Raw Cashmere Slate




 **CX 2225 MT**
Concrete Mortar




 **CX 2227 MT**
Concrete Coal

STONE




 **CX 2328 ST**
Classic Carrara Marmor




 **CX 2329 ST**
Blanca Brescia Marble



 **CX 2330 ST**
Arbascato Gold Marmor



 **CX 2331 ST**
Crema Brescia Marble



Continuous
innovation,
shaping surfaces
for tomorrow.

PERFORMANCE

PERFORMANCE

POSTFORMING

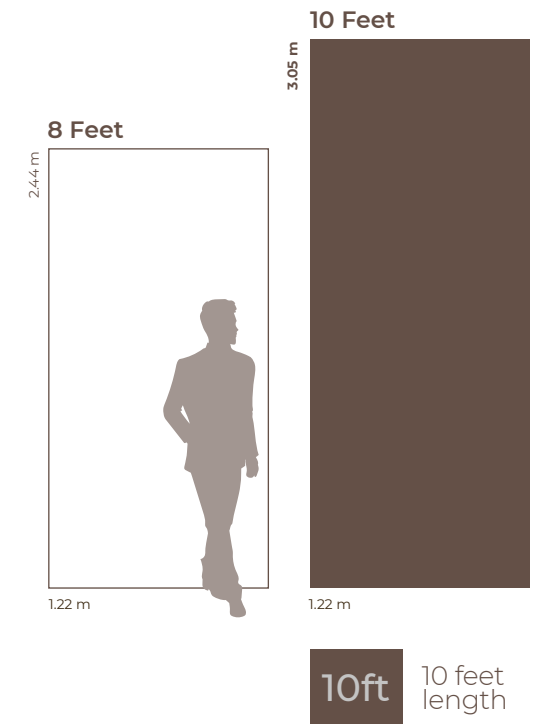
Experience a new era of design where **curves, edges,** and a **seamless finish** converge to redefine your space.

P Bending
R10mm

Our postforming laminate, engineered with advanced technology, combines a sleek design with excellent flexibility. It can bend to a 10mm radius, allowing for seamless edge applications and enhancing design versatility.

ALTO SERIES

Ideal for high ceiling applications, this series minimizes joint lines while maximizing visual continuity.

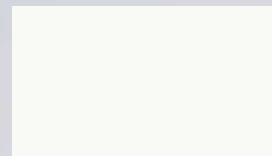
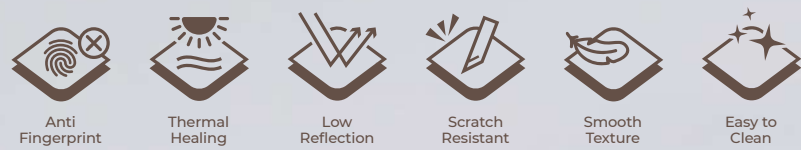


Designed for expansive surfaces and seamless finishes, the **ALTO SERIES** offers high pressure laminate in an **extended 10-foot length**.

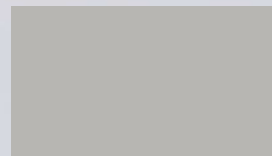
INVISITOUCH



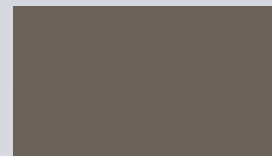
InvisiTouch combines the concept of cleanliness with self-healing property to deliver a surface that resists fingerprints and maintains a flawless appearance.



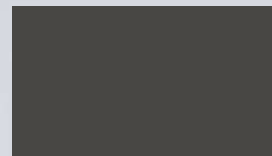
 CX-I 0301 AM
Invisi White




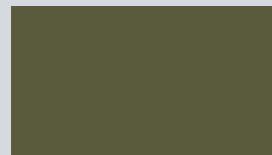
 CX-I 0305 AM
Invisi Cloud



 CX-I 0304 AM
Invisi Mocha



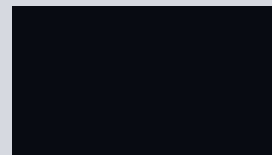
 CX-I 0302 AM
Invisi Graphite




 CX-I 0307 AM
Invisi Verde



 CX-I 0306 AM
Invisi Clay

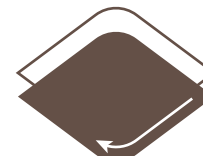


 CX-I 0303 AM
Invisi Black

LUMICORE




LumiCore represent purity. It eliminates the need for edge banding, providing a seamless and refined finish.




Close to the surface colors

Its enhanced surface and core add clarity, glow, and elegance, making it suitable for clean, modern interiors.




 CX-L 0301 DM
Lumi Pure White




 CX-L 9301 SL
Lumi White Clear




 CX-L 9302 SW
Lumi Natural Oak



 CX-L 9304 SL
Lumi Natural Chesnut



 CX-L 9303 BW
Lumi Wild Beech

PRODUCT PERFORMANCE + INFORMATION









PROPERTIES	NEMA	CARTA
DIMENSIONAL TOLERANCES		
Thickness	GB/T 17657-2103 Section 4.50	± 10%
Thickness Tolerance	GB/T 17657-2103 Section 4.50	± 10%
Squareness	Within 6 mm	Within 6 mm
Edge Straightness	1.5 mm / m	1.0 mm / m
Flatness	± 120 mm	± 60 mm
Light Resistance	Slight Effect	Slight Effect
Dimensional	2440 mm x 1220 mm	2440 mm x 1220 mm
PERFORMANCE PROPERTIES		
Cleanability of Surfaces (<i>Cycles</i>)	20 (Max)	16
STAIN RESISTANCE :		
Reagents (<i>1-10</i>)	No Effect	No Effect
Reagents (<i>11-15</i>)	Moderate Effect	Slight Effect
Boiling Water Resistance	No Effect	No Effect
High Temperature Resistance	Slight Effect	Slight Effect
Liner Glass Scratch Resistance	< 20/50/100/200 gr Mass	< 200 gr Mass
Ball Impact Resistance	500 mm	550 mm
Dart Impact Resistance	200 mm	200 mm
Radiant Heat Resistance (<i>Coil</i>)	80 Sec	80 Sec
Dimensional Change (<i>Machine Direction</i>)	0.70 % (Max)	0.60 % (Max)
Dimensional Change (<i>Cross Direction</i>)	1.20 % (Max)	1.00 % (Max)
ROOM TEMPERATURE DIMENSIONAL STABILITY :		
Dimensional Stability (<i>Machine Direction</i>)	0.60 % (Max)	0.50 % (Max)
Dimensional Stability (<i>Cross Direction</i>)	1.10 % (Max)	0.95 % (Max)
Wear Resistance	400 Cycles (Min)	> 400 Cycles
Tensile Strength	≥ 58.8 N / mm	No Requirement
Resistance to Surface	GB/T 17657-2103 Section 4.36	No Effect

CARTA SIGNATURE TEXTURE FINISHES

AG Abstract Grid	F Fine	NN Natural Napa	SR Smooth Rock
B Brushed (<i>Satin, Metal</i>)	G Gloss (<i>Mirror, Pearl</i>)	NR Natural Rock	ST Silky Touch
BW Bark Wood	HG Harmonized Grain	NW Natural Wood	SW Smoothened Wood
CB Coated Brushed	MG Metal Gloss	SK Symmetric Knit	VS Velvet Satin
DM Dry Matt	MT Mortar Touch	SM Specialized Metal	

3D VISION		
CODE	DESCRIPTION	PAGE
CX 5801 F	WHITE SPECTRA	06
CX 5802 F	SILVER SPECTRA	06
CX 5803 F	SILVER GRUNGE	09
CX 5804 F	BRONZE GRUNGE	09
CX 5805 F	GOLD GRUNGE	09
CX 5809 MG	CORRUGATED BROWN	07
CX 5810 MG	CORRUGATED SILVER	07
CX 5811 MG	CORRUGATED BRONZE	07
CX 5812 MG	CORRUGATED ALUMINIUM	07
CX 5855 F	BRONZE RIPPLE	06
CX 5856 F	SILVER RIPPLE	06
CX 5857 F	ALUMINIUM RIPPLE	06

METAL		
CODE	DESCRIPTION	PAGE
CX 5113 B	SILVER	12
CX 5114 B	LIGHT PECAN	12
CX 5115 B	WHITE	12
CX 5116 B	BLACK	12
CX 5117 B	PEACH	12
CX 5118 B	MOCHA BROWN	12
CX 5201 G	GOLDEN MIRROR	12
CX 5202 G	SILVER MIRROR	12
CX 5208 B	BRUSHED SILVER	12
CX 5209 B	BRUSHED GOLD	12
CX 5210 B	BRUSHED STAINLESS	12
CX 5211 B	VINTAGE BRONZE	12
CX 5212 B	BRUSHED COPPER	12
CX 5503 CB	MATTE BRONZE	13
CX 5504 CB	MATTE SILVER	13
CX 5505 CB	MATTE TITANIUM	13
CX 5506 CB	MATTE COPPER	13
CX 5507 CB	MATTE GOLD	13
CX 5901 SM	SILVER PLAID	13
CX 5902 SM	SILVER GRID	13
CX 5903 SM	COPPER GRILLE	13
CX 5904 SM	ANTIQUÉ ROSE	13
CX 5905 SM	RUSTED ALUMINIUM	13
CX 5906 SM	PEBBLED BEIGE	13
CX 5907 SM	PEBBLED ROSE	13
CX 5908 SM	PEBBLED ALUMINIUM	13

SOLID		
CODE	DESCRIPTION	PAGE
CX 0122 DM	SNOWFLAKE GREY	16
CX 0129 DM	CLAY WHITE	16
CX 0134 DM	ROSY PINK	17
CX 0232 DM	UMBER CHOCOLATE	17
CX 0235 DM	MACAROON BLUE	17
CX 0236 DM	PACIFIC BLUE	17
CX 0241 DM	TUSCAN BROWN	16
CX 0241 NN	TUSCAN BROWN	19
CX 0242 DM	JADE GREEN	18
CX 0301 DM	SIMPLY WHITE	17  
CX 0302 DM	MODEST BEIGE	18  
CX 0303 DM	SILVER GREY	16  
CX 0304 DM	VERSATILE BEIGE	16  

SOLID		
CODE	DESCRIPTION	PAGE
CX 0305 DM	ELEPHANT GREY	16  
CX 0306 DM	LIGHT TAUPE	16  
CX 0307 DM	ASPHALT GREY	16  
CX 0307 NN	ASPHALT GREY	19
CX 0308 DM	DOUBLE LATTE	17  
CX 0309 NN	SEPIA CREME	19
CX 0310 DM	OLIVE GREEN	18  
CX 0311 DM	MARIGOLD YELLOW	17  
CX 0312 DM	JUNIPER GREEN	18  
CX 0313 DM	BURNT ORANGE	17  
CX 0314 DM	STONE BLUE	17  
CX 0317 DM	DUSTY PINK	17  
CX 0318 DM	CLAY RED	17  
CX 0319 DM	ROAST CACAO	16  
CX 0320 DM	CYPRESS GREEN	18  
CX 0321 DM	STEEL GREY	16  
CX 0324 DM	RHINO GREY	16  
CX 0325 DM	HARBOUR GREY	16  
CX 0326 DM	IVORY WHITE	16  
CX 0340 DM	KERMIT GREEN	18  
CX 0509 DM	MUSTARD YELLOW	17
CX 0515 DM	CIDER RED	17
CX 0516 DM	SPRUCE BLUE	17
CX 0623 DM	WHISPER GREY	16
CX 0627 DM	THUNDER GREY	16
CX 0628 DM	ABSOLUTE BLACK	16
CX 0628 NN	ABSOLUTE BLACK	19
CX 0631 DM	ALMOND BEIGE	17
CX 0633 DM	ANTIQUÉ WHITE	17
CX 0637 DM	SAGE GREEN	18
CX 0639 DM	AURORA GREEN	18

WOODGRAIN		
CODE	DESCRIPTION	PAGE
CX 9125 BW	MAJORCA SEA WALNUT	27
CX 9200 BW	DARK LOGAN OAK	27
CX 9201 BW	WHITE MAPACHE OAK	27
CX 9202 NW	CRÈME MAPACHE OAK	25
CX 9203 NW	LIGHT MAPACHE OAK	25
CX 9204 NW	COCOA MAPACHE OAK	25
CX 9205 NW	NATURAL MAPACHE OAK	25
CX 9206 NW	CHARCOAL MAPACHE OAK	25
CX 9213 SW	CHARLESTON SOUTHERN PINE	32
CX 9214 SW	MAGNOLIA SOUTHERN PINE	32
CX 9215 SW	MARION SOUTHERN PINE	32
CX 9220 SW	GABRIEL ALPS CHESTNUT	26
CX 9222 SW	MAUDIT ALPS CHESTNUT	26
CX 9223 SW	PARADISO ALPS CHESTNUT	26
CX 9226 BW	SANTORINI SEA WALNUT	31
CX 9228 BW	IBIZA SEA WALNUT	31
CX 9229 BW	NATURAL BRAZILIAN WALNUT	34
CX 9230 BW	BRUNO STEFANO OAK	23
CX 9250 BW	HALONA DENALI ASH	28
CX 9251 BW	MALINA DENALI ASH	28
CX 9252 BW	NAUJA DENALI ASH	28
CX 9253 BW	TRUFFLE BROWN HICKORY	29

INDEX

WOODGRAIN		
CODE	DESCRIPTION	PAGE
CX 9254 BW	SEPIA BROWN HICKORY	29
CX 9256 SW	NOUGAT ENGLISH OAK	30
CX 9257 SW	BELUGA ENGLISH OAK	30
CX 9258 SW	CHALK ENGLISH OAK	30
CX 9259 BW	MONTE PERDIDO OAK	32
CX 9307 SW	MIDDAY VILLAGE OAK	22 <small>Icon P</small>
CX 9308 SW	DAWN VILLAGE OAK	22 <small>Icon P</small>
CX 9309 SW	DUSK VILLAGE OAK	22 <small>Icon P</small>
CX 9310 BW	NATURAL STEFANO OAK	23 <small>Icon P</small>
CX 9311 BW	CREMA STEFANO OAK	23 <small>Icon P</small>
CX 9312 BW	RUSTICO STEFANO OAK	23 <small>Icon P</small>
CX 9313 BW	SCURO STEFANO OAK	23 <small>Icon P</small>
CX 9314 BW	CLASSIC DAKOTA WALNUT	28 <small>Icon P</small>
CX 9315 BW	UMBER DAKOTA WALNUT	28 <small>Icon P</small>
CX 9316 DM	LIGHT TEXAS PECAN	30 <small>Icon P</small>
CX 9317 DM	CLASSIC TEXAS PECAN	30 <small>Icon P</small>
CX 9318 DM	CRÈME TEXAS PECAN	30 <small>Icon P</small>
CX 9319 BW	FRODE NORDIC ASH	29 <small>Icon P</small>
CX 9320 BW	FREYA NORDIC ASH	29 <small>Icon P</small>
CX 9321 BW	HILDA NORDIC ASH	29 <small>Icon P</small>
CX 9322 BW	ODIN NORDIC ASH	29 <small>Icon P</small>
CX 9370 BW	ALBERTA ARIA PINE	24 <small>Icon P</small>
CX 9371 BW	VICTORIA ANNE PINE	24 <small>Icon P</small>
CX 9372 BW	REGINA AGATHA PINE	24 <small>Icon P</small>
CX 9373 BW	OTTAWA ALBA PINE	24 <small>Icon P</small>
CX 9374 BW	SCOTIA ATHENA PINE	24 <small>Icon P</small>
CX 9375 BW	WHEATERED LOGAN OAK	27 <small>Icon P</small>
CX 9376 SW	BRIAR LOGAN OAK	27 <small>Icon P</small>
CX 9377 BW	LIGHT LOGAN OAK	27 <small>Icon P</small>
CX 9378 BW	KENT BRITANNIA OAK	35 <small>Icon P</small>
CX 9379 BW	DEVON BRITANNIA OAK	35 <small>Icon P</small>
CX 9510 BW	PURE HAMLET OAK	22
CX 9511 BW	HARMONY HAMLET OAK	22
CX 9512 BW	SWEET HAMLET OAK	22
CX 9519 BW	SUGAR SWEET CHESTNUT	26
CX 9521 BW	CARAMEL SWEET CHESTNUT	26
CX 9524 BW	ARCHER OAK	31
CX 9527 BW	WILDERY ELM	31
CX 9529 BW	MORRIS TEAK	31
CX 9530 BW	GRAND PARADISO OAK	32
CX 9531 BW	CINQUE TERRE OAK	32
CX 9700 DM	BIANCO STEFANO OAK	23
CX 9701 DM	WASHED BUTTERNUT WALNUT	34
CX 9702 BW	CHAMPAGNE COMMON WALNUT	34
CX 9710 BW	CASTANO SERA WALNUT	35 <small>Icon P</small>
CX 9711 BW	ROSSA SERA WALNUT	35 <small>Icon P</small>
CX 9712 BW	PERTIWI INDIES TEAK	33 <small>Icon P</small>
CX 9713 BW	SHINTA INDIES TEAK	33 <small>Icon P</small>
CX 9714 BW	RAMA INDIES TEAK	33 <small>Icon P</small>
CX 9715 BW	BHUMI INDIES TEAK	33 <small>Icon P</small>
CX 9716 BW	BUTTERMILK TEAK	34 <small>Icon P</small>
CX 9717 BW	CINNAMON TEAK	31 <small>Icon P</small>
CX 9801 HG	FLAXEN CASELA OAK	37
CX 9802 HG	AMBER CASELA OAK	37
CX 9803 HG	BROWN CASELA OAK	37
CX 9804 HG	COAL CASELA OAK	36

PATTERN		
CODE	DESCRIPTION	PAGE
CX 1101 G	PEARL	40
CX 1102 G	BRONZE PEARL	40
CX 1103 G	GREY PEARL	40
CX 1204 G	GALAXY BLACK	40
CX 2210 MT	LOFT ZILK	40
CX 2211 MT	IRISH ZILK	40
CX 2223 MT	RAW CASHMERE SLATE	43
CX 2225 MT	CONCRETE MORTAR	43
CX 2227 MT	CONCRETE COAL	43
CX 2305 SK	GREY PETIT PLAID	40 <small>Icon P</small>
CX 2306 SK	MOCHA PETIT PLAID	40 <small>Icon P</small>
CX 2307 SK	IVORY PETIT PLAID	40 <small>Icon P</small>
CX 2308 SK	IRON WOVEN LINEN	40 <small>Icon P</small>
CX 2309 SK	SMOKE WOVEN LINEN	40 <small>Icon P</small>
CX 2312 SK	COCONUT WOVEN LINEN	40 <small>Icon P</small>
CX 2313 SK	NUDE WOVEN LINEN	40 <small>Icon P</small>
CX 2320 MT	SMOOTH GREY CONCRETE	42 <small>Icon P</small>
CX 2326 DM	FINE GRAPHITE CONCRETE	43 <small>Icon P</small>
CX 2328 ST	CLASSIC CARRARA MARMOR	44 <small>Icon P</small>
CX 2329 ST	BLANCA BRESCIA MARBLE	44 <small>Icon P</small>
CX 2330 ST	ARBASCATO GOLD MARMOR	44 <small>Icon P</small>
CX 2331 ST	CREMA BRESCIA MARBLE	44 <small>Icon P</small>
CX 2521 DM	PREALPI PICCOLA GRANITE	43
CX 2522 DM	DOLOMIA PICCOLA GRANITE	43
CX 2524 DM	GRIS PICCOLA GRANITE	43
CX 2801 AG	ANCIENT BHITTI	41
CX 2802 SK	IVORY SILK	41
CX 2803 SK	TROPICAL RESORT	41
CX 2804 SR	SCRUBBED CONCRETE	41
CX 3315 NR	WHITE VERMONT SLATE	42 <small>Icon P</small>
CX 3316 NR	CREMA VERMONT SLATE	42 <small>Icon P</small>
CX 3318 DM	EARTH VERMONT SLATE	42 <small>Icon P</small>
CX 3319 NR	RUGGED GREY CONCRETE	42 <small>Icon P</small>
CX 3514 DM	LUNA LUX MARMO	42
CX 3517 DM	TERRA LUX MARMO	42

PERFORMANCE		
CODE	DESCRIPTION	PAGE
CX-I 0301 AM	INVISI WHITE	50
CX-I 0302 AM	INVISI GRAPHITE	50
CX-I 0303 AM	INVISI BLACK	50
CX-I 0304 AM	INVISI MOCHA	50
CX-I 0305 AM	INVISI CLOUD	50
CX-I 0306 AM	INVISI CLAY	50
CX-I 0307 AM	INVISI VERDE	50
CX-L 0301 DM	LUMI PURE WHITE	51
CX-L 9301 SL	LUMI WHITE CLEAR	51
CX-L 9302 SW	LUMI NATURAL OAK	51
CX-L 9303 BW	LUMI WILD BEECH	51
CX-L 9304 SL	LUMI NATURAL CHESNUT	51

As your safety and comfort are our top priorities, we refine our product innovation with international standards.

We pride ourselves on our unwavering commitment to delivering excellence.



Being Green Guard certified is one of our efforts to support sustainability in the environment.

HIGH PRESSURE LAMINATE MAINTENANCE & CARE



High Pressure Laminate are generally easy to maintain with a simple wipe using a damp cloth and mild soap over the surface. Make sure to wipe dry after each cleaning.

Difficult stains such as coffee or tea spill can easily be removed with a mild household cleaner or detergent. For a more persistent stain, baking soda or a warm 10% vinegar solution can be used - remember to wash them off with warm water and wipe dry.

CARE & HANDLING GUIDELINES – HIGH PRESSURE LAMINATE

- Always use a heat shield or trivet. Direct contact with hot cookware may damage the surface.
- Avoid acidic, abrasive, or harsh chemical cleaners to preserve the laminate's finish.
- Clean gently using a soft cloth, sponge, or brush.
- Use a chopping board at all times. Do not cut directly on the laminate surface.
- To maintain a flawless appearance, avoid dragging or sliding objects (especially on dark or high-gloss finishes.)
- NOTICE: Extended exposure to bleach or strong household chemicals may cause discoloration.
- Keep the protective film intact until fabrication and installation are fully completed.

PT. PRASETYA GEMA MULIA

SOUTH78 BUILDING

Jl. Boulevard Gading Serpong
Blok O No. 7 & 8, Gading Serpong
Tangerang, Banten 15334



+62 21 5098 6988



www.carta.co.id



[@CartaLaminates](https://www.instagram.com/CartaLaminates)



[Carta Laminates](https://www.facebook.com/CartaLaminates)